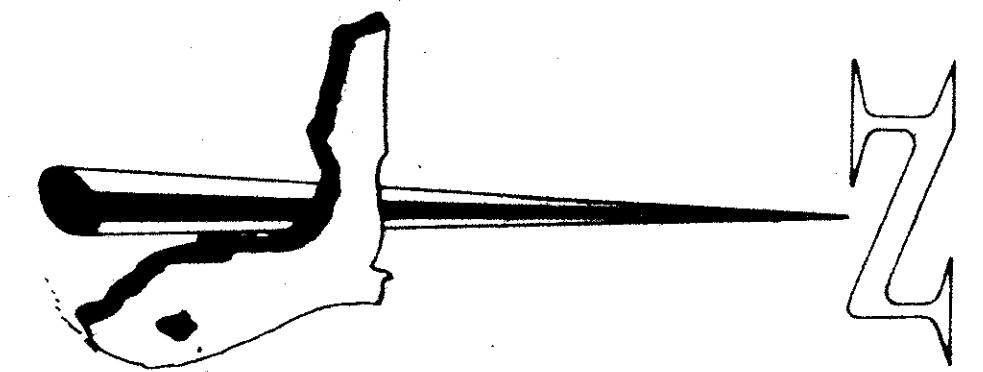
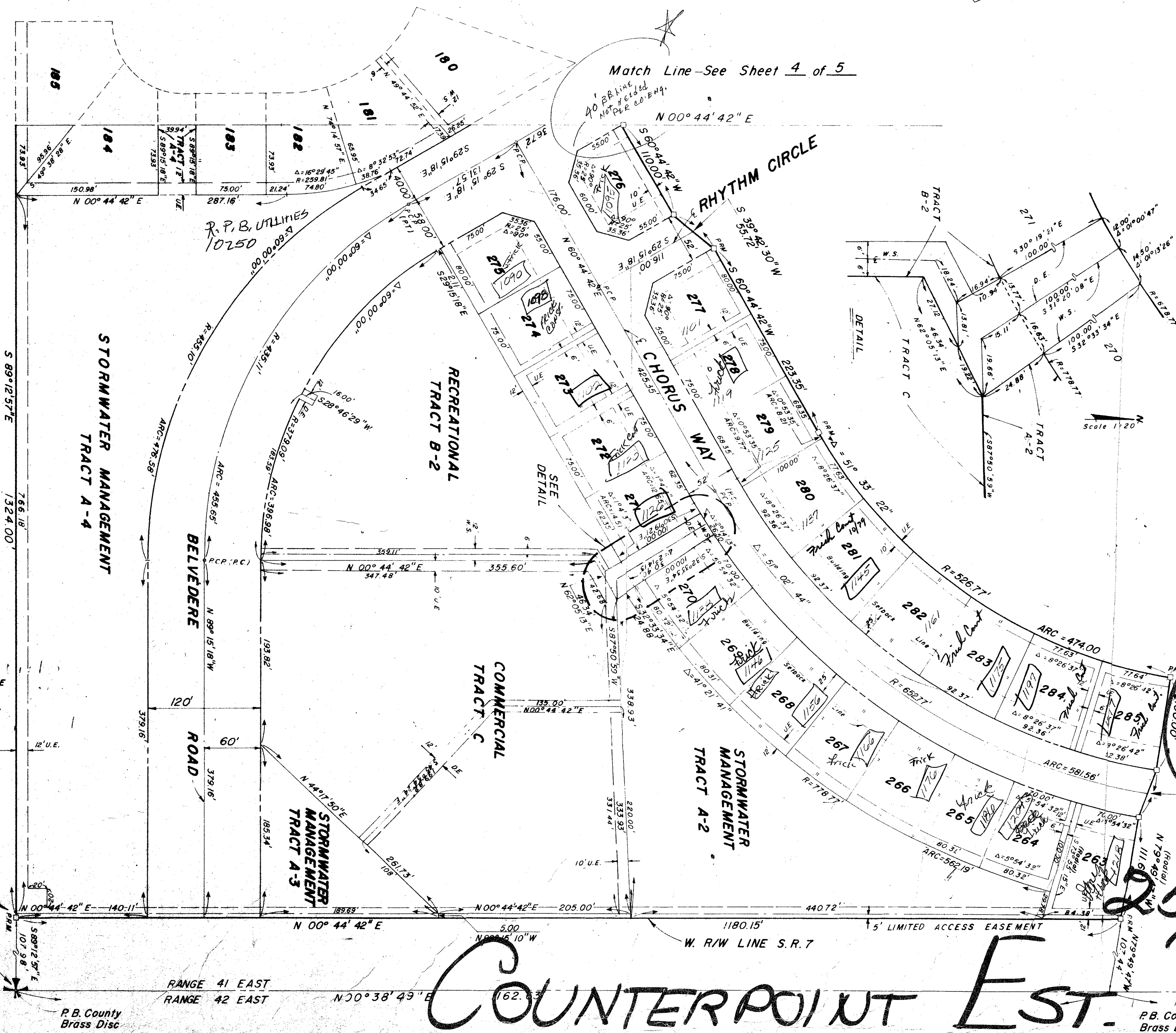


# COUNTERPOINT ESTATES PLAT No. 1

IN SECTION 25, TOWNSHIP 43 SOUTH, RANGE 41 EAST, PALM BEACH COUNTY, FLORIDA

MARCH 1977

PALM BEACH FARMS PLAT NO. 3  
P.B. 2 PAGE 45-54



GRAPHIC SCALE

BEARING DATUM

ALL BEARINGS SHOWN HEREON ARE RELATED TO AN ASSUMED BEARING OF N 89° 12' 57" W ALONG THE SOUTH LINE OF THE SE 1/4 OF SECTION 25, TOWNSHIP 43 SOUTH, RANGE 41 EAST.

NOTES

NO BUILDING OR ANY KIND OF CONSTRUCTION OR TREES SHALL BE PLACED WITHIN EASEMENTS. DRAINAGE EASEMENT TAKES PRECEDENCE OVER UTILITY EASEMENTS. MAINTENANCE ACCESS RIGHTS ARE GRANTED OVER ALL TRACTS SHOWN HEREON FOR THE PURPOSE OF MAINTENANCE OF UTILITIES.

LEGEND

- U.E. INDICATES POWER AND/OR TELEPHONE EASEMENT
- D.E. INDICATES 12' DRAINAGE EASEMENT
- W.S. INDICATES 12' WATER AND/OR SANITARY SEWER EASEMENT
- P.C.P. INDICATES PERMANENT CONTROL POINT
- P.R.M. INDICATES PERMANENT REFERENCE MONUMENT

P.O.B.

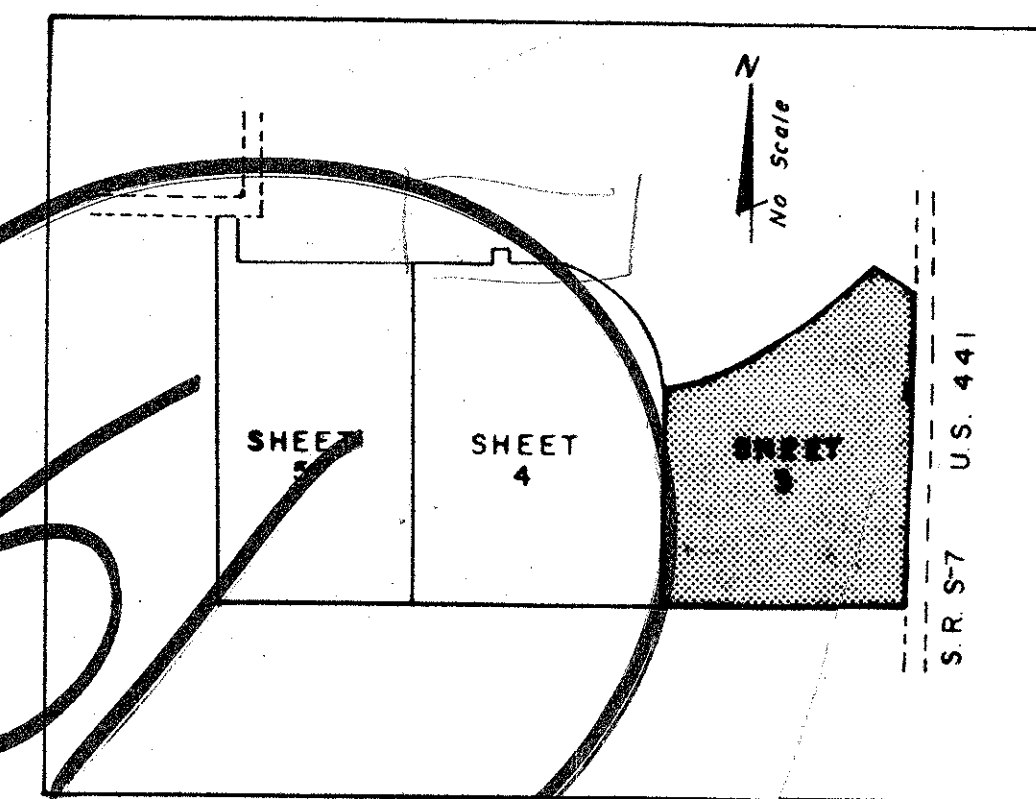
S.E. COR. SEC. 25/43/41

P.B. County Brass Disc

RANGE 41 EAST  
RANGE 42 EAST

# COUNTERPOINT EST.

25/43/41



KEY MAP

0225-000

R. GONZALEZ AND COMPANY, INC. REGISTERED PROFESSIONAL ENGINEERS			
FLORIDA SURVEYING & MAPPING, INC. REGISTERED LAND SURVEYORS			
NORTH PALM BEACH, FLORIDA			
COUNTERPOINT ESTATES PLAT NO. 158			
APPROVED:	DATE:	DATE:	DATE:
[Signature]	10/5/76	17551	17551
G.C.P.		17551-3	3 of 5